

## Your Learning Support

### Team Members

#### Learning Support Teacher / Team Leader

Leona Boyle      boylel@lrsd.ab.ca

#### Family School Liaison Counselor

Tracey Wallace      wallace@lrsd.ab.ca

#### Administration

John Norgard, Principal  
norgardj@lrsd.ab.ca

*Please feel free to contact any of us.*

### *Stavely School*

#### *Mission Statement*

Together, with the community, we strive to provide students a safe, positive, and caring environment to support individual life-long learning.



### **Stavely Elementary School**

---

Box 339, 4823 - 49 Street  
Stavely, AB T0L 1Z0

Ph: 403-549-3757  
Fax: 403-549-2396



**Learning  
Support**



**STAVELY  
Elementary  
SCHOOL**



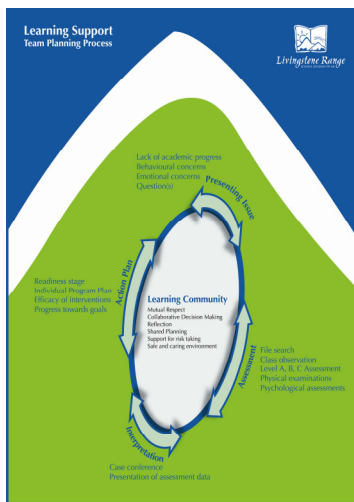
*"Ensuring success for all"*

403-549-3757

# Learning Support Team

The Learning Support Team at Stavelly Elementary is dedicated to collaborative problem solving and building capacity among staff to meet the needs of our exceptional learners.

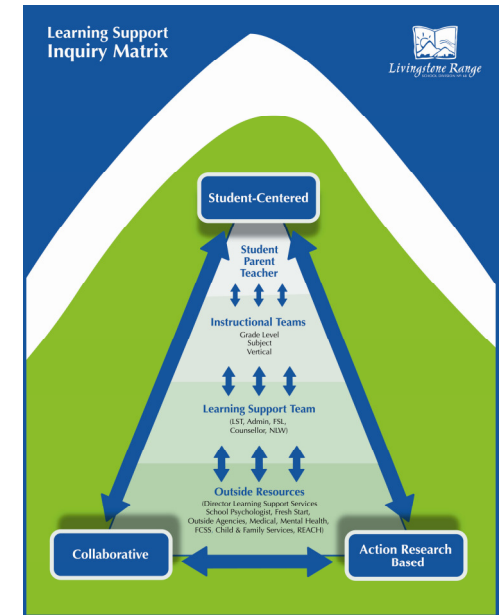
Classroom teachers and teacher assistants are important members of the team meetings. They are able to share presenting issues. We collaborate and put into action, plans to support our students who may be experiencing academic, social-emotional and/or behavioral challenges.



Learning Support Teacher, **Leona Boyle** is our team leader. She is the key contact for parents and teachers who have questions or concerns about our exceptional learners. She advocates for inclusive programming, organizes case conferences, and arranges for academic and other assessments. She oversees all of our Individual Program Planning (IPP) and Program Unit Funding (PUF) for preschool and kindergarten. Mrs. Boyle provides direction to classroom teachers to assist in meeting the needs of individual students and the planning and implementation of behaviour support services.

Family School Liaison Counselor, **Tracey Wallace** provides counseling and support to individual students or in groups. She strives to enhance family situations through support, education and referrals. She is a member on the school-based threat assessment team and post-crisis response team. She also collaborates in providing character education and social skills programming.

Administrator, **John Norgard** provides leadership, direction and support for inclusive education for all our students. He keeps informed of all student issues



as well as oversees and supports team initiatives.

Parents or guardians are the most complete source of information for the child and have the greatest investment in their child's future. Parents are involved in programming decisions and are kept informed. Parents/guardians are requested to provide feedback on how well students apply skills learned at school to the home and to the community.